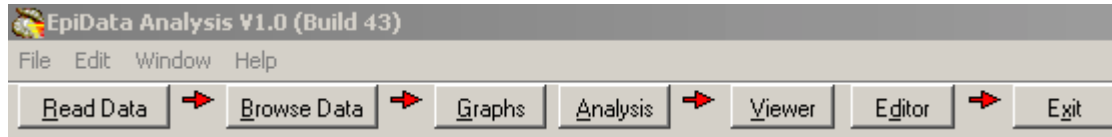




Flowsheet of working with EpiData Analysis

EpiData Association. <http://www.epidata.dk> JM.Lauritsen. V. nov 2005



A simplified flowsheet of how EpiData Analysis is working. **Blue parts** are optional, **black parts** are in memory and **red parts** save permanently to disk. Note that the programme always works with a copy of data. Your data on the disk are not changed unless you as a user instruct the programme to do so. Note also that the commands issued are saved when you exit.

